

# MAP/EDITOR™ for MicroStation®

**New Capabilities! Improved Performance! MAP/EDITOR has been completely rewritten for speed and functionality**

## Reduce overall editing time from hours to minutes

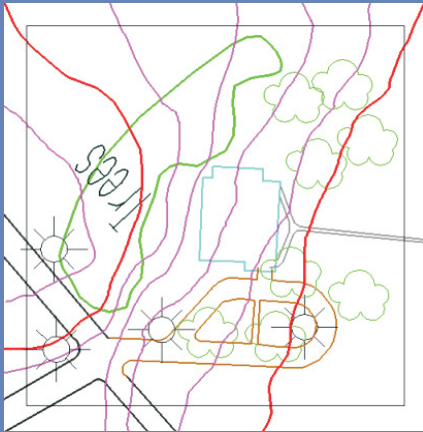
DAT/EM MAP/EDITOR for MicroStation is a full 3D editing package for MicroStation DGN files. It has many time-saving tools that process groups of objects, and includes vertex and partial line string editing, and 2D digitizing commands. Contains both interactive and batch mode commands to accommodate every editing need, from running a single command on a single element to running many commands across multiple files.

MAP/EDITOR is an MDL application that works completely within MicroStation V8 and V8i on Windows XP®, Windows Vista®, and Windows 7®.

### MAP/EDITOR for MicroStation features include:

- **BREAK** elements at selected vertices or near points, or on an intersecting element or fence
- **BREAKLINE FILTER** deletes or modifies points from the area in or near line strings, fences and/or shapes
- **CHANGE ATTRIBUTES** to standardize or change combinations of level, color, weight and line code
- **CHECK ATTRIBUTES** displays a list or report of unverified objects for interactive editing
- **CLIP** and remove elements from inside or outside of shapes
- **CLOSE LINE STRING** converts line strings into shapes
- **CURVE TO LINE STRING** converts curves to line strings
- **DELETE** objects based on attributes
- **DTM DISTRIBUTOR** merges multiple DTM point distributions into one evenly spaced DTM grid
- **FILTER** line strings to remove unneeded vertices while preserving the original shape of the line string
- **FIND DUPLICATE** objects and display them for editing
- **FIX COMPLEX HEADER** verifies and repairs complex line strings and shapes; compresses them into the minimum number of components; drops complex status when possible
- **JOIN** sets of line strings into single elements
- **LINE STRING TO CURVE** converts line strings to curves
- **PATTERN** performs global patterning and pattern removal
- **REPLACE** one object type with another, or change text strings and cells
- **ROTATE** objects based on attributes
- **SCALLOP** line strings defining trees or vegetation
- **SMOOTH** line strings by adding vertices for a smoother appearance
- **SQUARE** existing line strings or shapes
- **TOUCH** and trim lines and line strings of one symbology to objects on another symbology
- **ZCHECK** marks and zooms to conflicting Z values and XY intersections

There are over 60 additional commands to efficiently and accurately condition DGN files for final delivery. Many of these tools are developed based on user input and requests. Contact **DAT/EM** today for products designed specifically for your mapping needs.



DAT/EM Systems International  
8240 Sandlewood Place  
Suite 101  
Anchorage, Alaska 99507  
USA

PH: +907-522-3681  
FX: +907-522-3688

Email: sales@datem.com  
http://www.datem.com

# MAP/EDITOR™ for AutoCAD®

**New Capabilities! Improved Performance! MAP/EDITOR has been completely rewritten for speed and functionality**

## Reduce overall editing time from hours to minutes

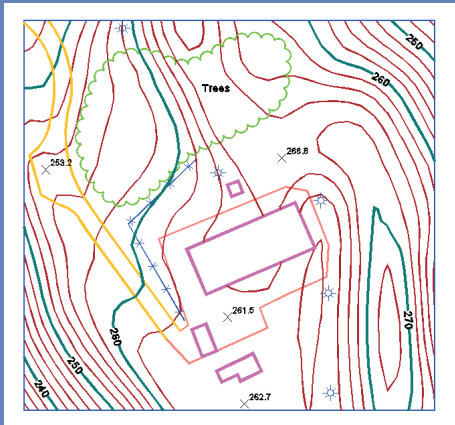
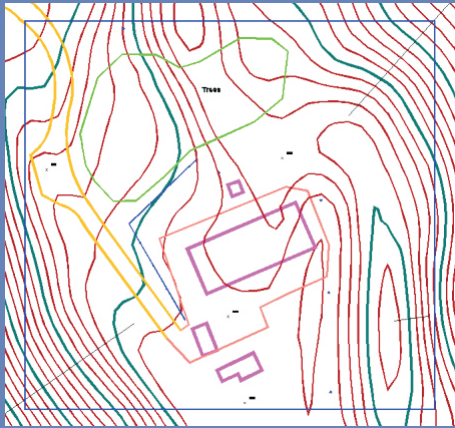
DAT/EM MAP/EDITOR for AutoCAD is a full 3D editing package for AutoCAD™ DWG files. It has many time-saving tools such as global block changes and clipping, and includes several 2D digitizing commands. The can reduce overall editing time from hours to minutes. Commands may be run interactively on an as-needed basis, or in batch using a command list file.

MAP/EDITOR is an ADS application working completely within AutoCAD 2000+ on Windows XP®, Windows Vista®, and Windows 7®.

### MAP/EDITOR for AutoCAD features include:

- 3D TO 2D conversion of polylines
- BREAK polylines along cutting edges
- BREAKLINE FILTER changes the layer of DTM points that are located near linework
- CLIP objects and/or layers exterior or interior to a polyline boundary
- CLIP objects around text
- CROSSCHECK searches for crossing or nearly crossing polylines
- DTM DISTRIBUTOR combines two or more DTM point sets into a single, evenly distributed grid
- EDITLINE draws a new polyline section, or connects parts of two polylines to a new section, joining them all together into one polyline
- EXTEND polylines to meet other polylines
- FILTER reduces the number of polyline vertices while preserving the original polyline appearance
- FIX Z values on 2D polylines so each vertex has the same elevation as the starting segment
- GRIDIT inserts a map sheet grid with northing and easting text
- INTERP adds intermediate elevation contours between existing index contours within a user-defined area
- JOIN two or more polylines together into one polyline
- LABELIT adds elevation labels or blocks to polylines with options for rotation and breaking
- PATTERN polylines with blocks or drawings
- RESIZE symbols and text
- REVERSE polyline vertex order
- SCALLOP polylines to denote areas covered by trees and vegetation
- SMOOTH polylines
- SQUARE sides of existing objects

Enjoy a guarantee of satisfaction with the Map/Editor for AutoCAD, as well as all other DAT/EM mapping products.



**autodesk**  
authorized developer

DAT/EM Systems International  
8240 Sandlewood Place  
Suite 101  
Anchorage, Alaska 99507  
USA

PH: +907-522-3681  
FX: +907-522-3688

Email: sales@datem.com  
http://www.datem.com