

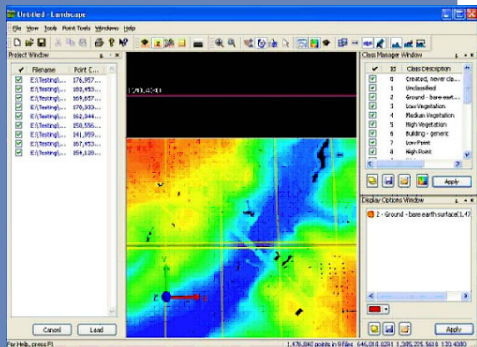
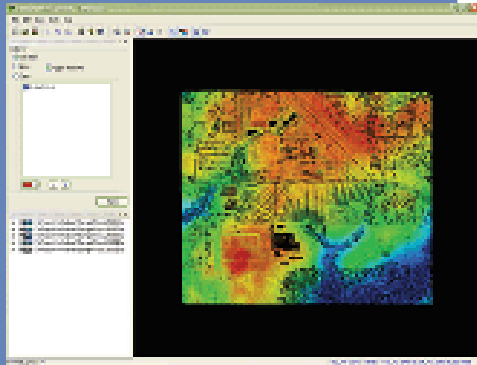
# DAT/EM LANDSCAPE™

## Essential Point Cloud Editing Toolkit

New from DAT/EM Systems International, **LANDSCAPE** is an essential software tool for editing large terrain point sets such as LiDAR (Light Detection and Ranging) files. It provides an advanced, efficient, fast, and easy-to-understand portal into the world of 3-dimensional LiDAR points. **LANDSCAPE** is equipped with utilities for editing, modifying, and classifying the points and for generating new data based on the points. **LANDSCAPE**'s tools can be configured by the user to enable better understanding of the data view. The editing tools in **LANDSCAPE** allow for easy modification of LiDAR data. Editing tools can be used to affect a single point, all points in a project, or a selection built using **LANDSCAPE**'s sophisticated filtering tools. The feature collection tools enable **LANDSCAPE** to digitize 3D vectors using **DAT/EM**'s **CAPTURE** packages. CAD and GIS drawings in AutoCAD®, MicroStation®, and ArcGIS® formats may all be superimposed into **LANDSCAPE**, and objects in those drawings may be used as input into the various tools in **LANDSCAPE**. Or use **DAT/EM DRAWING TOOLS**, the simple built-in vector editor.

Several large-point-dataset tools are incorporated in **LANDSCAPE** and are also available with a **SUMMIT EVOLUTION™ PROFESSIONAL** installation:

- **Generate LiDAR Frame** – generates images and their stereo mates from point data files, enabling 3D stereoscopic imaging.
- **Generate Stereo Mate** – generates stereo mates (.tif) from existing LiDAR images (i.e. "LiDARgrammetry")
- **Point Transfer** – point file management tool to combine, extract, and merge files.
- **SUPER/IMPOSITION** Tool – load vector and orthophoto files to view together with the points in **LANDSCAPE**.



DAT/EM Systems International  
 8240 Sandlewood Place  
 Suite 101  
 Anchorage, Alaska 99507  
 USA

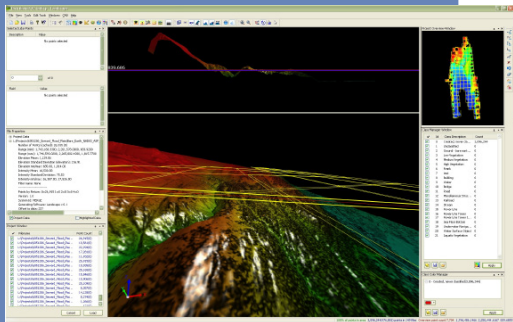
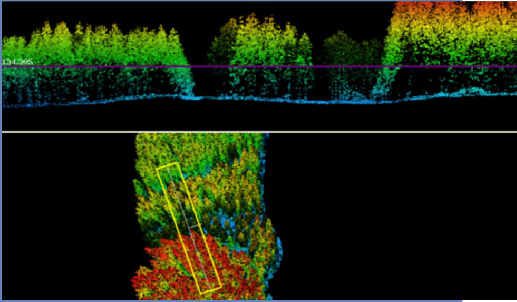
PH: +907-522-3681  
 FX: +907-522-3688

Email: [sales@datem.com](mailto:sales@datem.com)  
<http://www.datem.com>

## LANDSCAPE FEATURES

### Make your point with DAT/EM LANDSCAPE

- View points in perspective stereo with many coloring and viewing options. Roam and zoom from any angle or distance.
- No limit to the number of simultaneous input files. Tools for controlling the detail on display.
- Full 3D cursor support for panning, zooming, rotating, selecting, and digitizing. Plus button programming and macro support.
- Edit and reclassify points and write the corrected point set to a new file.
- Digitize new 3D vectors such as breaklines based on the points.
- View existing .dxf, .dwg, .dgn, or .shp vector files with the points.
- Colorize your view of your pointcloud by elevation, return, flight-line, intensity, RGB color (orthophoto), or classification.
- Draw and edit objects directly into AutoCAD, MicroStation, or ArcGIS. Or use the built-in vector editor, **DAT/EM DRAWING TOOLS**.
- Superimpose existing objects directly from AutoCAD, MicroStation, or ArcGIS.
- Fully integrated with **SUMMIT EVOLUTION**, DAT/EM's world-class digital photogrammetric workstation. Superimpose **LANDSCAPE's** points on a **SUMMIT** stereomodel for direct validation of your work.



### Recommended configuration

(<http://www.datem.com/Support/Configurations>)

- High-end Technical Workstation
- Windows XP Professional, VISTA Ultimate and Windows 7 Ultimate or Professional operating systems; 32- or 64-bit.
- Processor: 2 Quad Core Intel® XeonT with 2.50 GHz processors or higher
- Memory: 2 GB or more of SDRAM
- Hard Drive: 200 GB or larger hard drive (7,200 RPM speed)
- Stereo Monitors: Planar StereoMirror Dual LCD monitor or NVIDIA 3D Vision Bundle
- Secondary (CAD) Monitor: 20 inch or greater LCD panel; compatible polarization
- Input Devices: Stealth or Softmouse 3D cursor, System Mouse, and **DAT/EM TOUCHPAD**
- DVD drive or Internet connection
- USB and serial ports to support hardware connections
- NVIDIA Quadro FX 4600 or better
- AutoCAD 2002 series through 2011; MicroStation V8, V8 2004 Edition, V8i; ArcGIS 9.1 - 10.

### DAT/EM Systems International

8240 Sandlewood Place  
Suite 101  
Anchorage, Alaska 99507  
USA

PH: +907-522-3681  
FX: +907-522-3688

Email: [sales@datem.com](mailto:sales@datem.com)  
<http://www.datem.com>