

# Esri® StreetMap™ Premium

Advanced Geocoding, Routing, and Cartography

## Leverage Your ArcGIS Investment

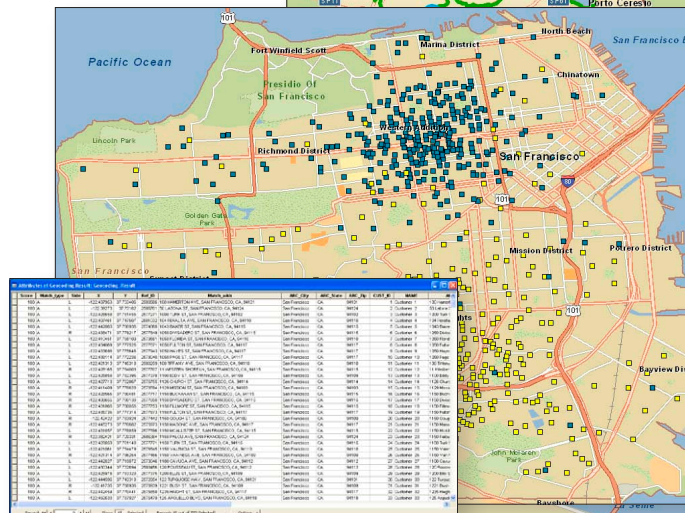
Esri® StreetMap™ Premium is an enhanced street dataset that works with Esri's ArcGIS® software to provide geocoding, routing, and high-quality cartographic display for the entire United States, Canada, and Europe.

Based on commercial street data from NAVTEQ® and TomTom®, StreetMap Premium works with ArcGIS Server and ArcGIS Desktop to help you achieve the highest address geocoding match rates and generate the best routes and driving directions. In addition to ArcGIS Server and ArcGIS Desktop, StreetMap Premium is optimized to work with the ArcGIS Network Analyst extension.

**Geocoding**—With StreetMap Premium, you have the ability to geocode addresses individually or in batch mode. Those addresses can then be added as stops along a route.

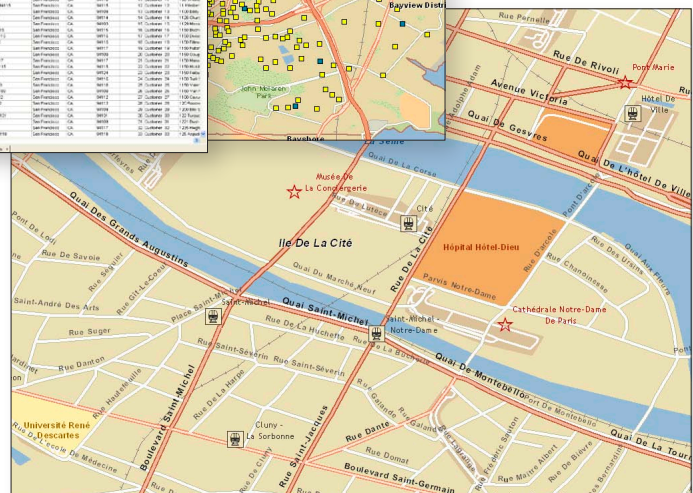
**Routing**—You can generate shortest distance, fastest, point-to-point, or multistop routes. For any route you generate, StreetMap Premium takes one-way and turn restriction information into consideration, ensuring your route planning is as accurate as possible.

**Cartographic Display**—StreetMap Premium is ideal for high-quality basemaps and cartographic output. Road types, landmarks, county lines, water bodies, and more, are presymbolized. Scale-dependent features, labels, and themes automatically turn on or off according to the layer you select.



Generate shortest distance, fastest, point-to-point, or multistop routes with StreetMap Premium and ArcGIS.

Using StreetMap Premium with the ArcGIS Desktop ArcMap™ application allows you to geocode customer files to two different locations.



A map of the city of Paris shows the rich cartographic display capabilities of StreetMap Premium including presymbolized road types, landmarks, and water bodies.

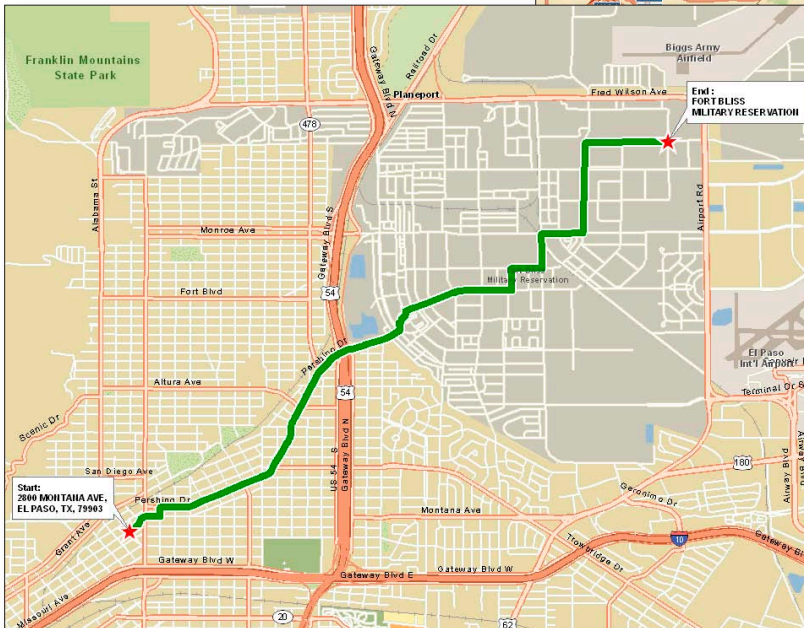


## Optimized Data Format

The optimized data structure of StreetMap Premium enables street data to be directly accessed with ArcGIS and read without first decompressing it. With this optimization, the draw performance and rendering capabilities are much faster than other file-based data sources. The optimization is achieved through the Esri® Smart Data Compression format, which reduces the size of the source data significantly.



Clearly display complex road networks.



Display the quickest point-to-point route.

## Flexible Licensing Options

You can license StreetMap Premium based on your usage and desired geography. Usage licensing options include geocoding, routing, and/or cartographic display. Geography options include continent (North America or Europe), country, or state/province.

For more details on Esri StreetMap Premium, visit [esri.com/streetmap](http://esri.com/streetmap).

1-800-447-9778 | [info@esri.com](mailto:info@esri.com) | [esri.com](http://esri.com)

